

Windham High School: 2017 NH YRBS Preliminary Report

Tobacco Use - Behaviors: Time Trends, By Sex, and By Grade

Windham High School is in the Greater Derry Public Health Region and is served by the Bridges crisis center.

PRELIMINARY RESULTS (v1.2)

This report contains preliminary results for 2017. All 2017 results are subject to change when the CDC returns the final dataset to the State, expected in early 2018. Please use caution when referring to and using these preliminary data until the final data set is received from the CDC. This report contains results for all questions asked on any YRBS survey since 2007. Note, access to regional level results were first made available in 2015 and are not available prior to that year.

State and Regional Estimates

State and Regional estimates are calculated from a random sample developed using scientific survey methods. These methods ensure the respondents are representative of students in the region in the State. These estimates account for student, classroom, school, and regional factors. The random sample is not designed to provide school level estimates.

School Level Estimates

The 2017 survey response rate at Windham High School was 87% where 786 of 901 students took the survey. **School level estimates are unweighted and based on a convenience sample of students in attendance, and not opting out of participation in the YRBS, on a given date and time during the school year.** However, because participation was relatively high the school estimates may still be representative of the entire school population. Results could be less representative if specific classrooms or classroom types were not included in the survey. We have attempted to estimate how many students in the school actually fall within each risk category. We did this by scaling up the students responding in the survey using school enrollment data.

Estimates number and percentage were suppressed (*) if the underlying sample size was <60 respondents and/or cell sizes are between 1 and 5.

Help and assistance

Questions on this report (NH YRBS Community level preliminary report)

Health Statistics and Data Management

Division of Public Health Services - State of NH

NH.YouthRiskBehaviorSurvey@dhhs.nh.gov; (603) 271-4988;

Additional technical assistance for YRBS related information

NH Center for Excellence

nhcenterforexcellence@jsi.com; (603) 573-3300

<http://nhcenterforexcellence.org/center-services/request-ta/>

Change Log

v1.2: Indicators revised to display by CDC question direction as greater risk; and, revised methodology to more accurately display number of students projected based on school enrollment data.

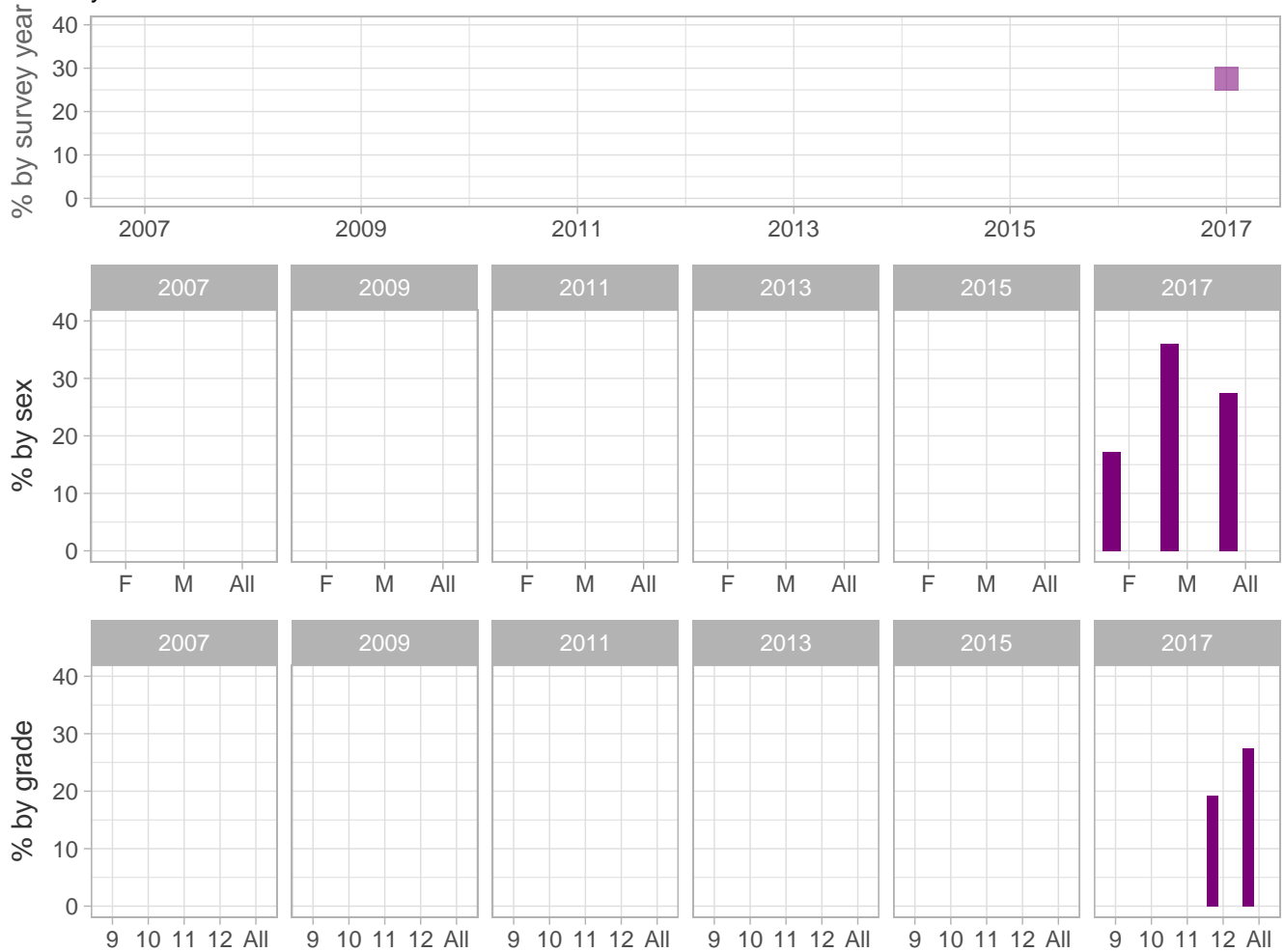
v1.1: School estimates corrected to include CDC sample - report sent 8/31-9/1

v1.0: Initial report sent 8/29

 School
  Region
  NH

Tobacco Use – Behaviors

Percent of students who smoked cigarette even one or two puffs (for the first time) before age 13 years



School-level by Sex and Grade

| | | 2009(pct) | 2011(pct) | 2013(pct) | 2015(pct) | 2017(pct) | 2017(n) |
|----------|------|-----------|-----------|-----------|-----------|-----------|---------|
| By sex | F | - | - | - | - | 17.2 | 6 |
| | M | - | - | - | - | 36.1 | 15 |
| By grade | 9th | - | - | - | - | * | * |
| | 10th | - | - | - | - | * | * |
| | 11th | - | - | - | - | * | * |
| | 12th | - | - | - | - | 19.2 | 6 |
| All | All | - | - | - | - | 27.5 | 22 |

How the question was actually asked: How old were you when you first tried cigarette smoking, even one or two puffs?; a: I have never tried cigarette smoking, not even one or two puffs ; b: 8 years old or younger ; c: 9 or 10 years old ; d: 11 or 12 years old ; e: 13 or 14 years old ; f: 15 or 16 years old ; g: 17 years old or older;

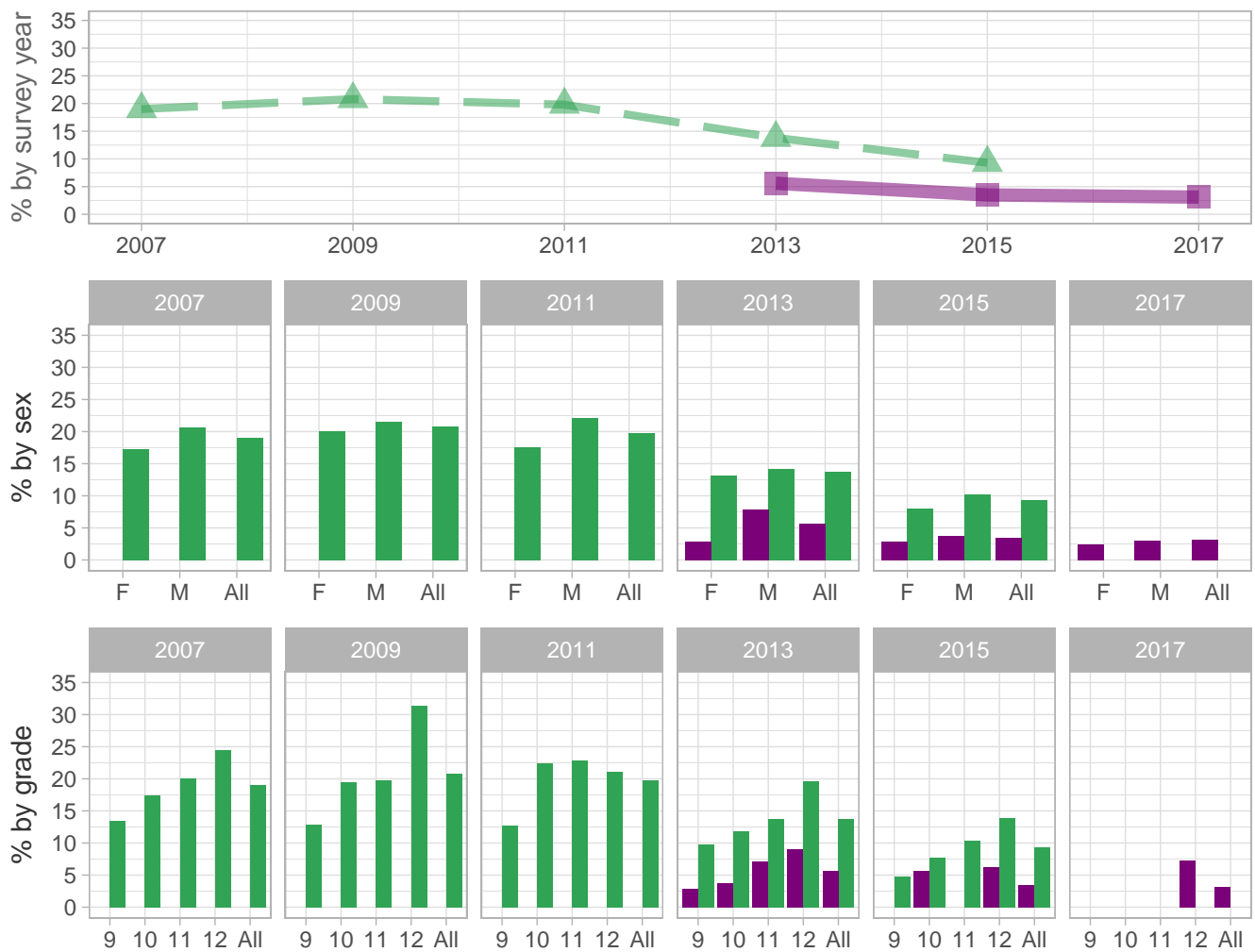
Percent (pct): numerator: bcd; denominator: bcdefg; qid: 185; 2007q999; 2009q999; 2011q999; 2013q999; 2015q999; 2017q33; Number (n): Estimated number of students projected based on school enrollment data.

-: Data not available; *: Suppressed due to small cell sizes.

 School
  Region
  NH

Tobacco Use – Behaviors

Percent of students who smoked cigarettes on at least 1 day during the past 30 days



School-level by Sex and Grade

| | | 2009(pct) | 2011(pct) | 2013(pct) | 2015(pct) | 2017(pct) | 2017(n) |
|----------|------|-----------|-----------|-----------|-----------|-----------|---------|
| By sex | F | - | * | 2.9 | 2.9 | 2.4 | 11 |
| | M | - | * | 7.9 | 3.8 | 3.0 | 14 |
| By grade | 9th | - | * | 2.9 | * | * | * |
| | 10th | - | * | 3.7 | 5.6 | * | * |
| | 11th | - | - | 7.2 | * | * | * |
| | 12th | - | - | 9.0 | 6.3 | 7.3 | 14 |
| All | All | - | * | 5.6 | 3.5 | 3.1 | 28 |

How the question was actually asked: During the past 30 days, on how many days did you smoke cigarettes?; a: 0 days ; b: 1 or 2 days ; c: 3 to 5 days ; d: 6 to 9 days ; e: 10 to 19 days ; f: 20 to 29 days ; g: All 30 days;

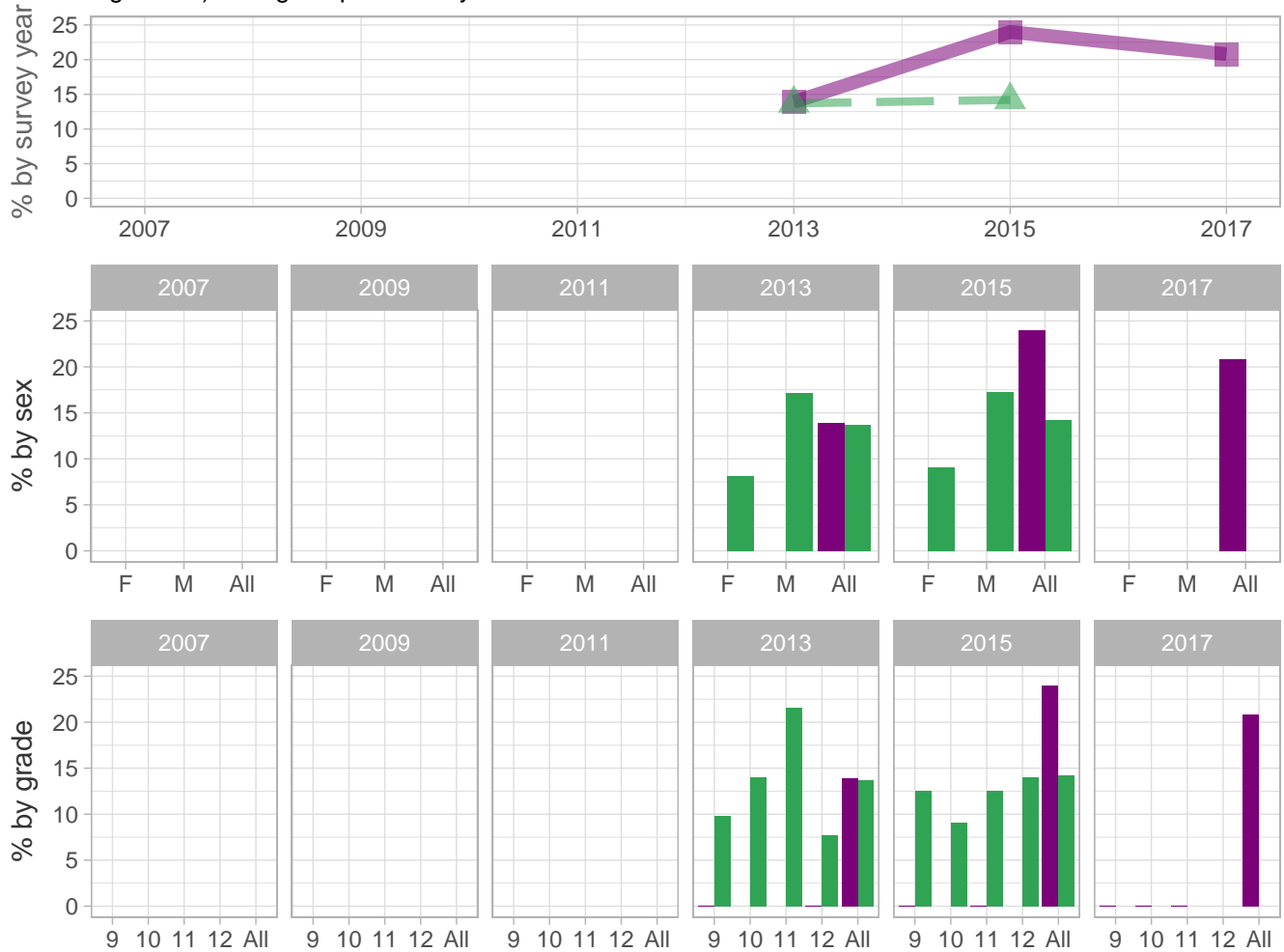
Percent (pct): numerator: bcdefg; denominator: abcdefg; qid: 30; 2007q30; 2009q27; 2011q30; 2013q30; 2015q31; 2017q34; Number (n): Estimated number of students projected based on school enrollment data.

-: Data not available; *: Suppressed due to small cell sizes.

 School
  Region
  NH

Tobacco Use – Behaviors

Percent of students who smoked more than 10 cigarettes per day (among students who currently smoked cigarettes) during the past 30 days



School-level by Sex and Grade

| | | 2009(pct) | 2011(pct) | 2013(pct) | 2015(pct) | 2017(pct) | 2017(n) |
|----------|------|-----------|-----------|-----------|-----------|-----------|---------|
| By sex | F | - | - | * | * | * | * |
| | M | - | - | * | * | * | * |
| By grade | 9th | - | - | 0.0 | 0.0 | 0.0 | 0 |
| | 10th | - | - | * | * | 0.0 | 0 |
| | 11th | - | - | * | 0.0 | 0.0 | 0 |
| | 12th | - | - | 0.0 | * | * | * |
| All | All | - | - | 13.9 | 24.0 | 20.8 | 6 |

How the question was actually asked: During the past 30 days, on the days you smoked, how many cigarettes did you smoke per day?; a: I did not smoke cigarettes during the past 30 days ; b: Less than 1 cigarette per day ; c: 1 cigarette per day ; d: 2 to 5 cigarettes per day ; e: 6 to 10 cigarettes per day ; f: 11 to 20 cigarettes per day ; g: More than 20 cigarettes per day;

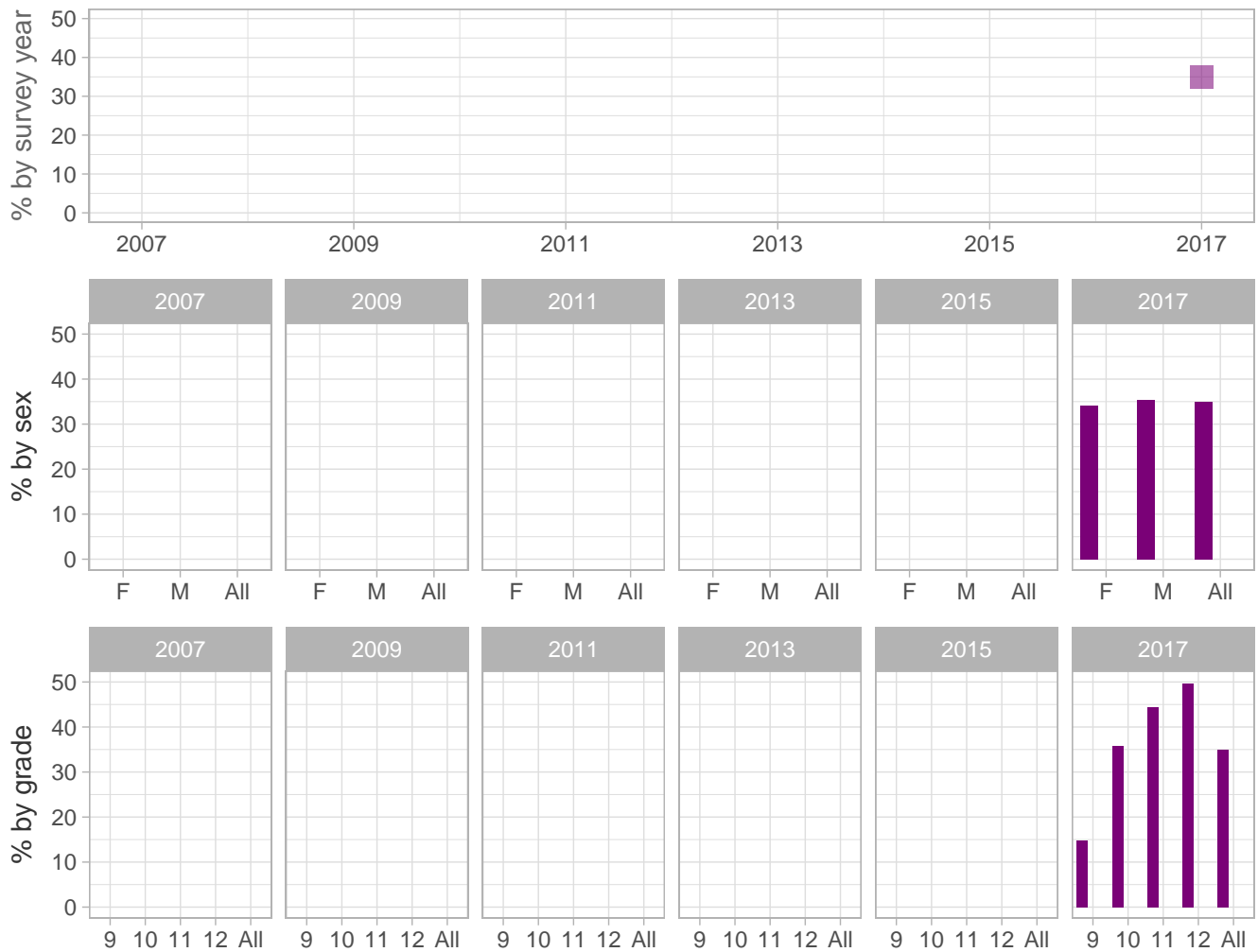
Percent (pct): numerator: fg; denominator: bcdefg; qid: 149; 2007q999; 2009q999; 2011q999; 2013q31; 2015q32; 2017q35; Number (n): Estimated number of students projected based on school enrollment data.

-: Data not available; *: Suppressed due to small cell sizes.

 School  Region  NH

Tobacco Use – Behaviors

Percent of students who ever used an electronic vapor product during their life



School-level by Sex and Grade

| | | 2009(pct) | 2011(pct) | 2013(pct) | 2015(pct) | 2017(pct) | 2017(n) |
|----------|------|-----------|-----------|-----------|-----------|-----------|---------|
| By sex | F | - | - | - | - | 34.2 | 146 |
| | M | - | - | - | - | 35.3 | 164 |
| By grade | 9th | - | - | - | - | 14.9 | 40 |
| | 10th | - | - | - | - | 35.8 | 80 |
| | 11th | - | - | - | - | 44.4 | 96 |
| | 12th | - | - | - | - | 49.7 | 95 |
| All | All | - | - | - | - | 35.0 | 315 |

How the question was actually asked: Have you ever used an electronic vapor product?; a: Yes ; b: No;

Percent (pct): numerator: a; denominator: ab; qid: 186; 2007q999; 2009q999; 2011q999; 2013q999; 2015q999; 2017q36;

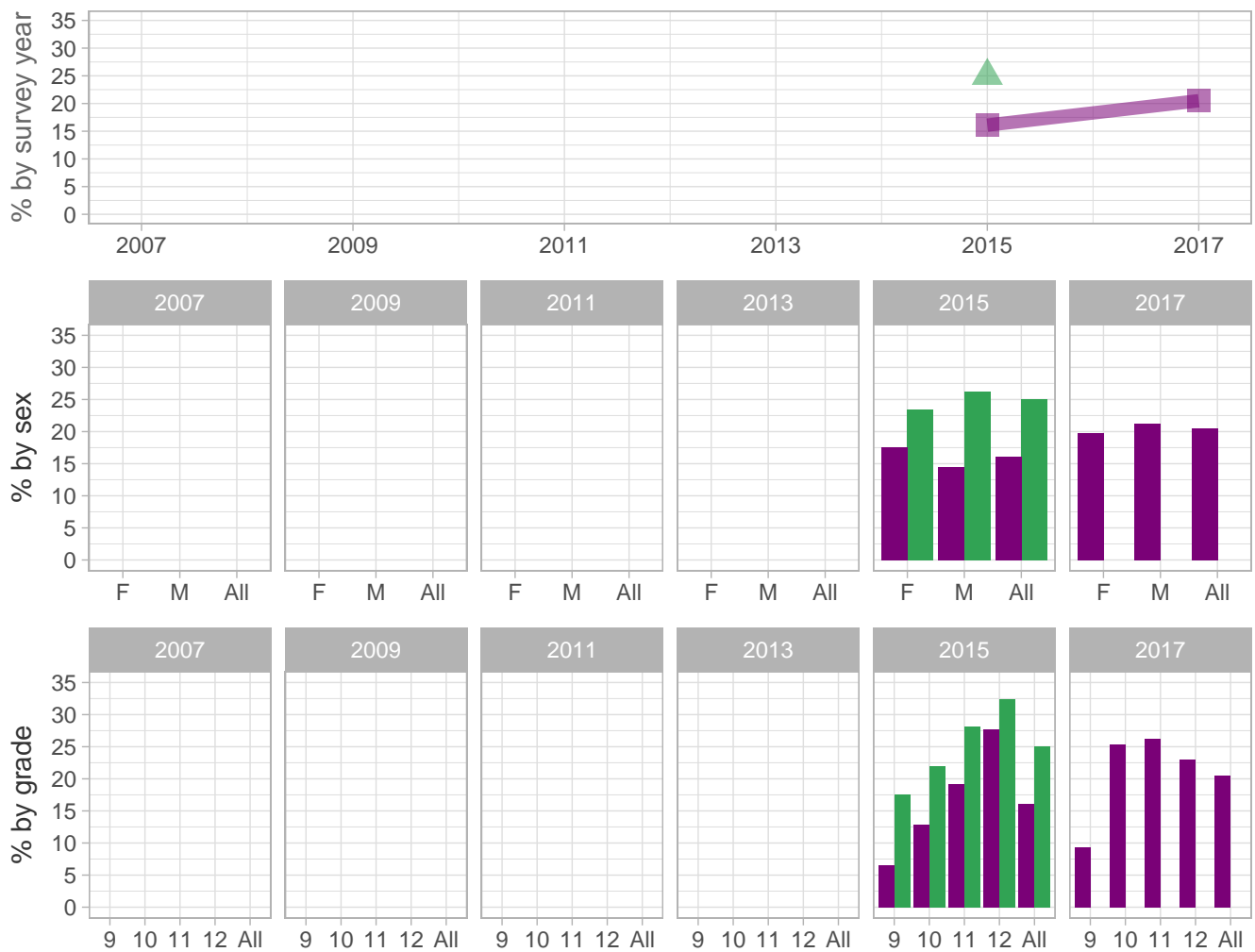
Number (n): Estimated number of students projected based on school enrollment data.

-: Data not available; *: Suppressed due to small cell sizes.

 School
  Region
  NH

Tobacco Use – Behaviors

Percent of students who used electronic vapor products (on at least 1 day) during the past 30 days



School-level by Sex and Grade

| | | 2009(pct) | 2011(pct) | 2013(pct) | 2015(pct) | 2017(pct) | 2017(n) |
|----------|------|-----------|-----------|-----------|-----------|-----------|---------|
| By sex | F | - | - | - | 17.5 | 19.8 | 85 |
| | M | - | - | - | 14.5 | 21.2 | 99 |
| By grade | 9th | - | - | - | 6.6 | 9.3 | 25 |
| | 10th | - | - | - | 12.8 | 25.4 | 57 |
| | 11th | - | - | - | 19.2 | 26.2 | 57 |
| | 12th | - | - | - | 27.7 | 23.0 | 44 |
| All | All | - | - | - | 16.1 | 20.5 | 186 |

How the question was actually asked: During the past 30 days, on how many days did you use an electronic vapor product?; a: 0 days ; b: 1 or 2 days ; c: 3 to 5 days ; d: 6 to 9 days ; e: 10 to 19 days ; f: 20 to 29 days ; g: All 30 days;

Percent (pct): numerator: bcdefg; denominator: abcdefg; qid: 172; 2007q999; 2009q999; 2011q999; 2013q999; 2015q37; 2017q37;

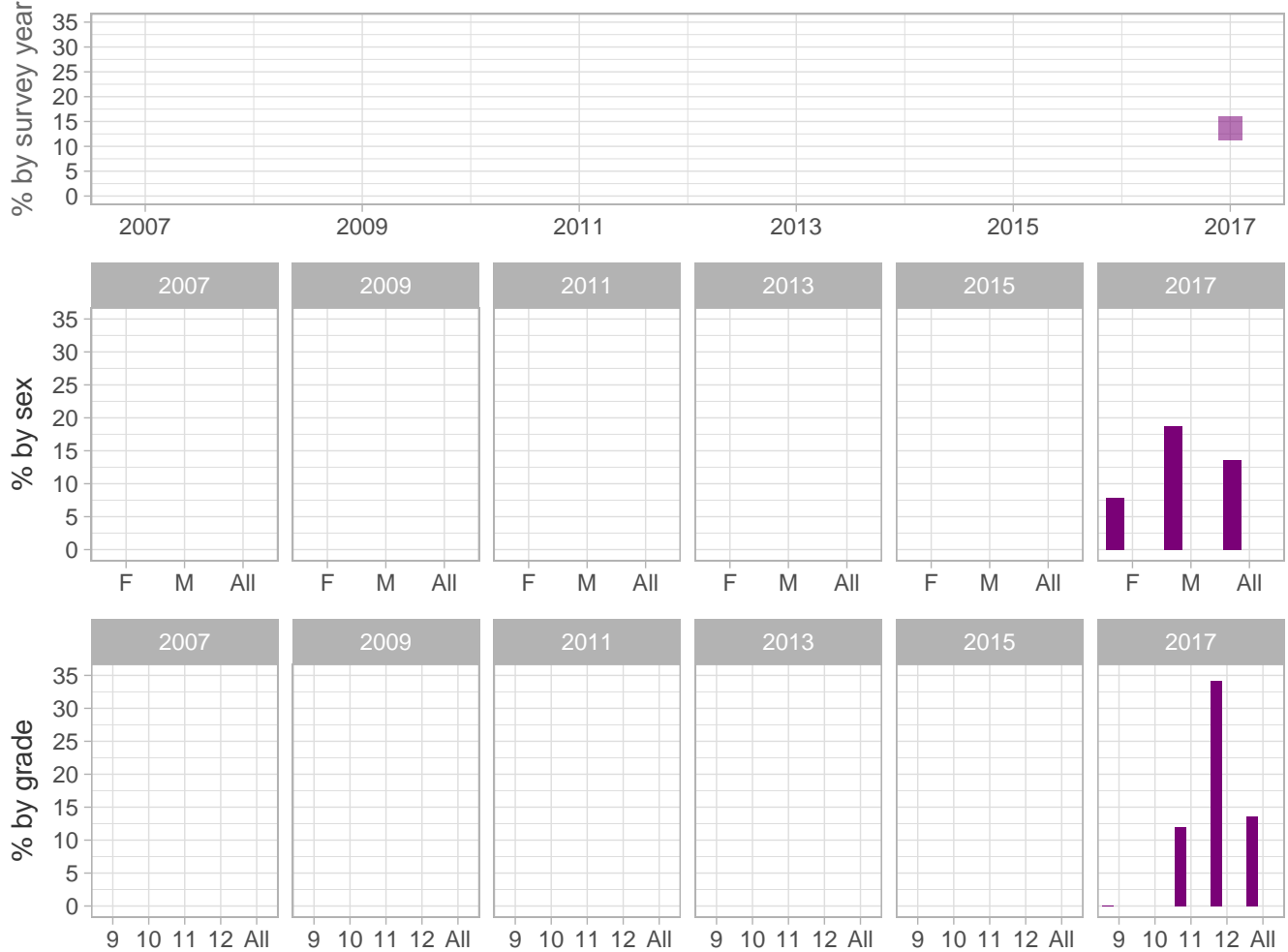
Number (n): Estimated number of students projected based on school enrollment data.

-: Data not available; *: Suppressed due to small cell sizes.



Tobacco Use – Behaviors

Percent of students who usually obtained their own electronic vapor products by buying them in a store or gas station (among students who currently smoked cigarettes) during the past 30 days



School-level by Sex and Grade

| | | 2009(pct) | 2011(pct) | 2013(pct) | 2015(pct) | 2017(pct) | 2017(n) |
|-----------------|------------|-----------|-----------|-----------|-----------|-----------|---------|
| By sex | F | - | - | - | - | 7.9 | 7 |
| | M | - | - | - | - | 18.7 | 20 |
| By grade | 9th | - | - | - | - | 0.0 | 0 |
| | 10th | - | - | - | - | * | * |
| | 11th | - | - | - | - | 12.0 | 7 |
| | 12th | - | - | - | - | 34.1 | 17 |
| All | All | - | - | - | - | 13.6 | 27 |

How the question was actually asked: During the past 30 days, how did you usually get your own electronic vapor products? (Select only one response.); a: I did not use any electronic vapor products during the past 30 days ; b: I bought them in a store such as a convenience store, supermarket, discount store, gas station, or vape store ; c: I got them on the Internet ; d: I gave someone else money to buy them for me ; e: I borrowed them from someone else ; f: A person 18 years old or older gave them to me ; g: I took them from a store or another person ; h: I got them some other way;

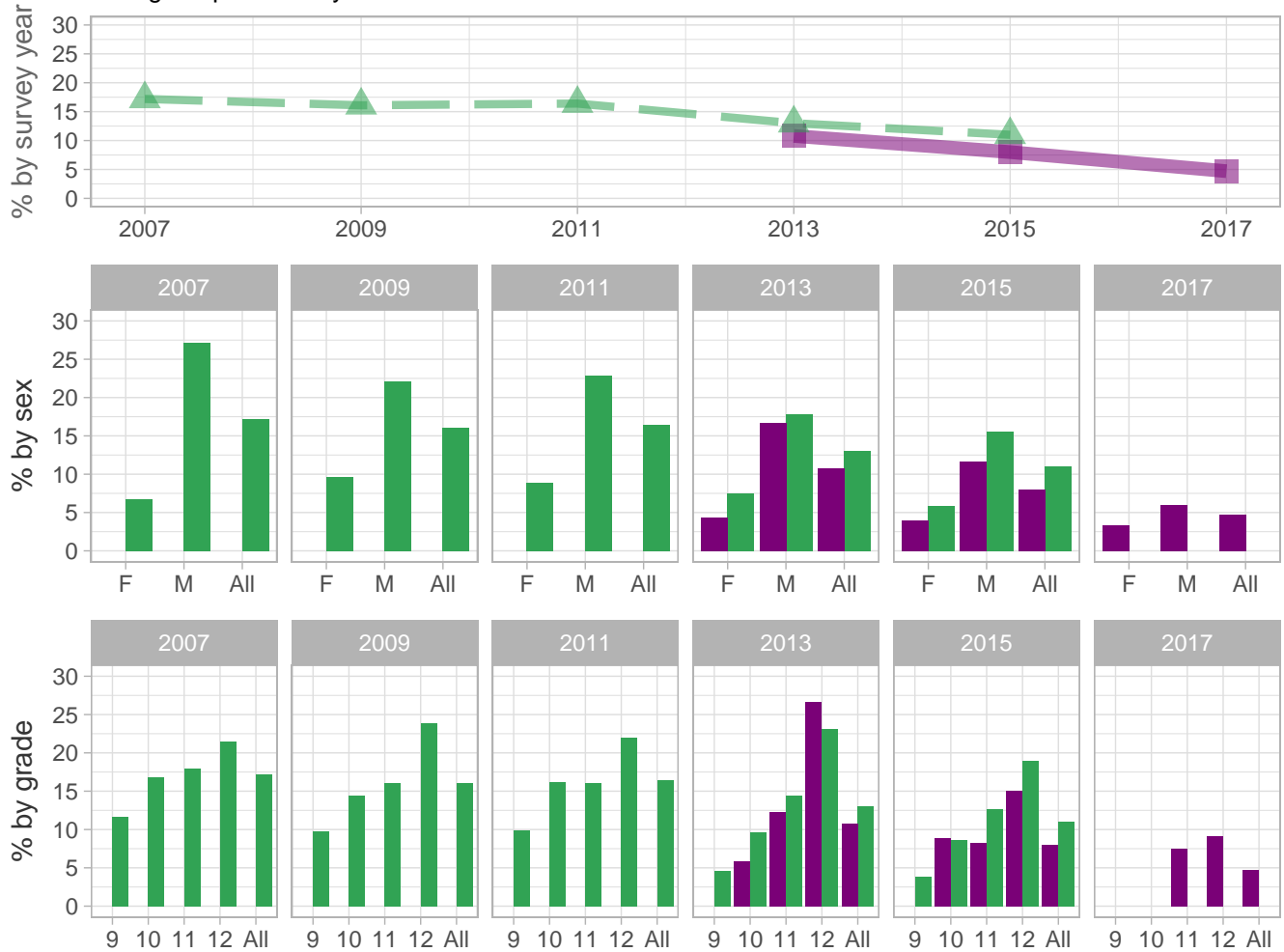
Percent (pct): numerator: b; denominator: bcdefgh; qid: 187; 2007q999; 2009q999; 2011q999; 2013q999; 2015q999; 2017q38; Number (n): Estimated number of students projected based on school enrollment data.

-: Data not available; *: Suppressed due to small cell sizes.

 School
  Region
  NH

Tobacco Use – Behaviors

Percent of students who smoked cigars (cigars, cigarillos, or little cigars) on at least 1 day during the past 30 days



School-level by Sex and Grade

| | | 2009(pct) | 2011(pct) | 2013(pct) | 2015(pct) | 2017(pct) | 2017(n) |
|----------|------|-----------|-----------|-----------|-----------|-----------|---------|
| By sex | F | - | * | 4.4 | 4.0 | 3.3 | 14 |
| | M | - | * | 16.7 | 11.6 | 6.0 | 28 |
| By grade | 9th | - | * | * | * | * | * |
| | 10th | - | * | 5.8 | 8.9 | * | * |
| | 11th | - | - | 12.3 | 8.2 | 7.5 | 17 |
| | 12th | - | - | 26.7 | 15.1 | 9.1 | 18 |
| All | All | - | * | 10.8 | 8.0 | 4.7 | 43 |

How the question was actually asked: During the past 30 days, on how many days did you smoke cigars, cigarillos, or little cigars?; a: 0 days ; b: 1 or 2 days ; c: 3 to 5 days ; d: 6 to 9 days ; e: 10 to 19 days ; f: 20 to 29 days ; g: All 30 days;

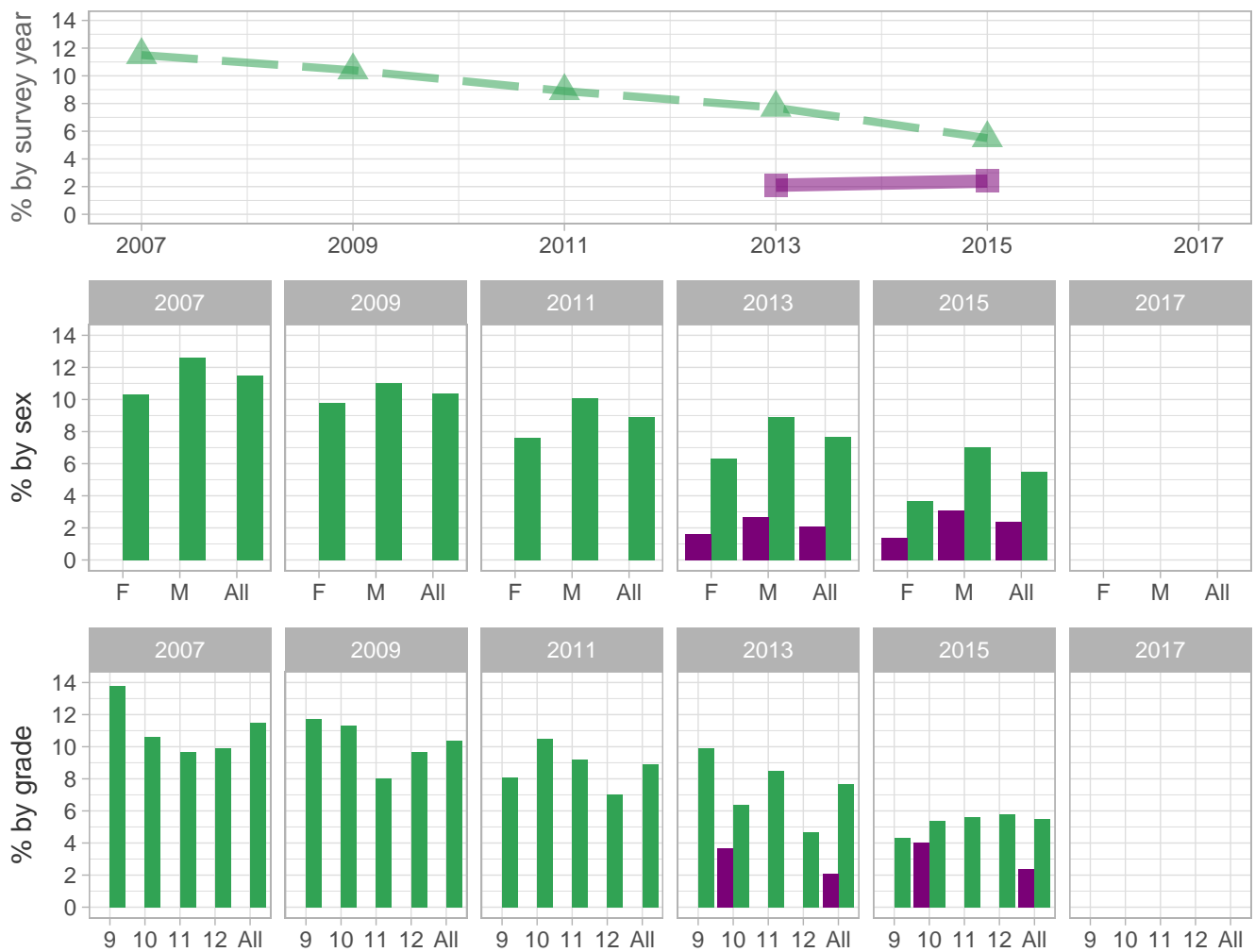
Percent (pct): numerator: bcdefg; denominator: abcdefg; qid: 32; 2007q32; 2009q29; 2011q32; 2013q38; 2015q36; 2017q39; Number (n): Estimated number of students projected based on school enrollment data.

-: Data not available; *: Suppressed due to small cell sizes.

 School
  Region
  NH

Tobacco Use – Behaviors

Percent of students who smoked a whole cigarette (for the first time) before age 13 years



School-level by Sex and Grade

| | | 2009(pct) | 2011(pct) | 2013(pct) | 2015(pct) | 2017(pct) | 2017(n) |
|----------|------|-----------|-----------|-----------|-----------|-----------|---------|
| By sex | F | - | * | 1.6 | 1.4 | - | - |
| | M | - | * | 2.7 | 3.1 | - | - |
| By grade | 9th | - | * | * | * | - | - |
| | 10th | - | * | 3.7 | 4.0 | - | - |
| | 11th | - | - | * | * | - | - |
| | 12th | - | - | * | * | - | - |
| | All | - | * | 2.1 | 2.4 | - | - |

How the question was actually asked: How old were you when you smoked a whole cigarette for the first time?; a: I have never smoked a whole cigarette; b: 8 years old or younger; c: 9 or 10 years old; d: 11 or 12 years old; e: 13 or 14 years old; f: 15 or 16 years old; g: 17 years old or older;

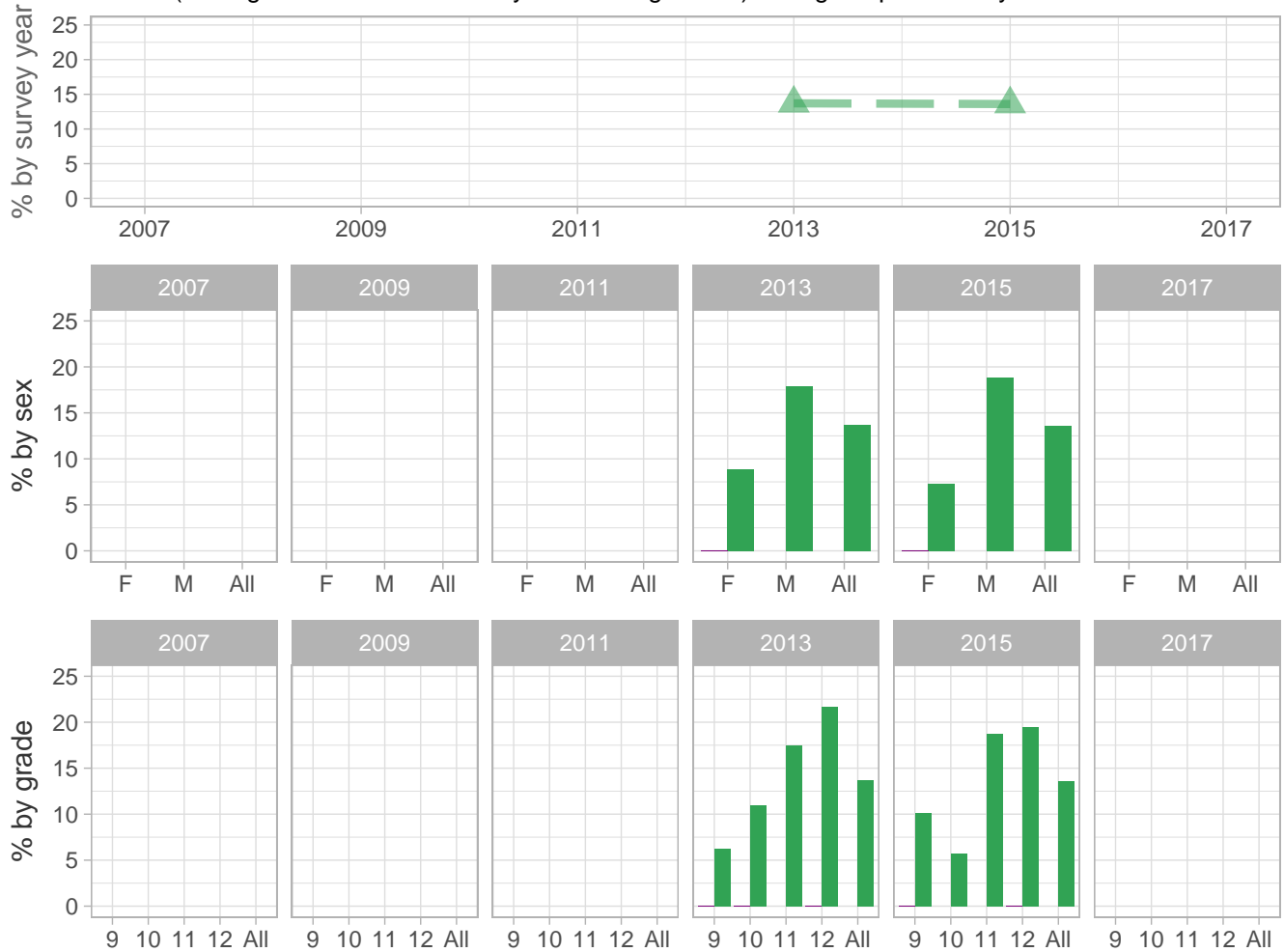
Percent (pct): numerator: bcd; denominator: abcdefg; qid: 29; 2007q29; 2009q26; 2011q29; 2013q29; 2015q30; 2017q999; Number (n): Estimated number of students projected based on school enrollment data.

-: Data not available; *: Suppressed due to small cell sizes.

 School
  Region
  NH

Tobacco Use – Behaviors

Percent of students who usually obtained their own cigarettes by buying them in a store or gas station (among students who currently smoked cigarettes) during the past 30 days



School-level by Sex and Grade

| | | 2009(pct) | 2011(pct) | 2013(pct) | 2015(pct) | 2017(pct) | 2017(n) |
|-----------------|------------|-----------|-----------|-----------|-----------|-----------|---------|
| By sex | F | - | - | 0.0 | 0.0 | - | - |
| | M | - | - | * | * | - | - |
| By grade | 9th | - | - | 0.0 | 0.0 | - | - |
| | 10th | - | - | 0.0 | * | - | - |
| | 11th | - | - | * | - | - | - |
| | 12th | - | - | 0.0 | 0.0 | - | - |
| All | All | - | - | * | * | - | - |

How the question was actually asked: During the past 30 days, how did you usually get your own cigarettes? (Select only one response.); a: I did not smoke cigarettes during the past 30 days; b: I bought them in a store such as a convenience store, supermarket, discount store, or gas station; c: I got them on the Internet; d: I gave someone else money to buy them for me; e: I borrowed (or bummed) them from someone else; f: A person 18 years old or older gave them to me; g: I took them from a store or family member; h: I got them some other way;

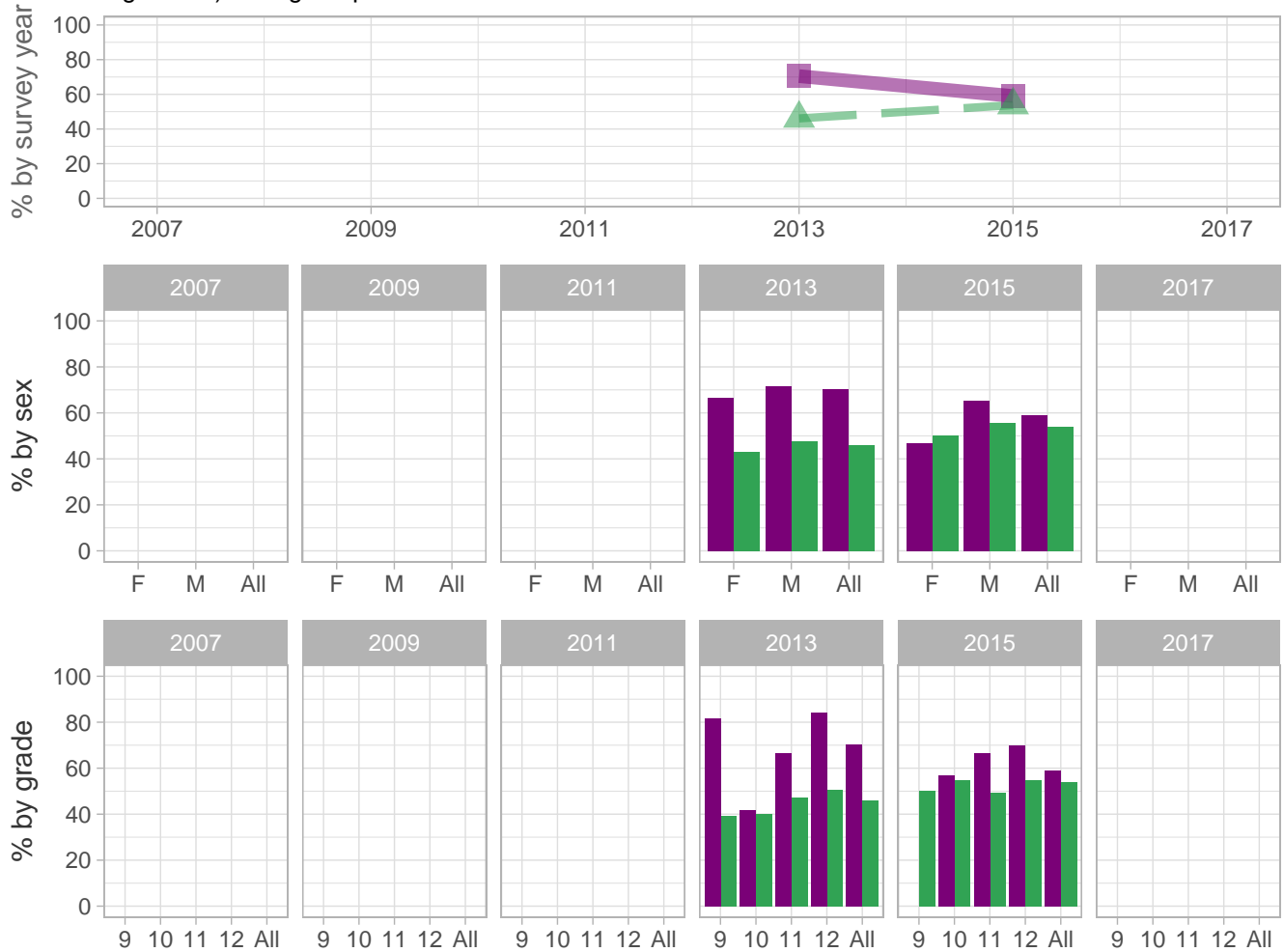
Percent (pct): numerator: b; denominator: bcdefgh; qid: 150; 2007q999; 2009q999; 2011q999; 2013q32; 2015q33; 2017q999; Number (n): Estimated number of students projected based on school enrollment data.

-: Data not available; *: Suppressed due to small cell sizes.

 School
  Region
  NH

Tobacco Use – Behaviors

Percent of students who did not try to quit smoking cigarettes (among students who currently smoked cigarettes) during the past 12 months



School-level by Sex and Grade

| | | 2009(pct) | 2011(pct) | 2013(pct) | 2015(pct) | 2017(pct) | 2017(n) |
|----------|------|-----------|-----------|-----------|-----------|-----------|---------|
| By sex | F | - | - | 66.7 | 46.7 | - | - |
| | M | - | - | 71.8 | 65.2 | - | - |
| By grade | 9th | - | - | 81.8 | * | - | - |
| | 10th | - | - | 41.7 | 57.1 | - | - |
| | 11th | - | - | 66.7 | 66.7 | - | - |
| | 12th | - | - | 84.2 | 70.0 | - | - |
| All | All | - | - | 70.5 | 59.0 | - | - |

How the question was actually asked: During the past 12 months, did you ever try to quit smoking cigarettes?; a: I did not smoke during the past 30 days; b: Yes; c: No;

Percent (pct): numerator: c; denominator: bc; qid: 153; 2007q999; 2009q999; 2011q999; 2013q35; 2015q34; 2017q999;

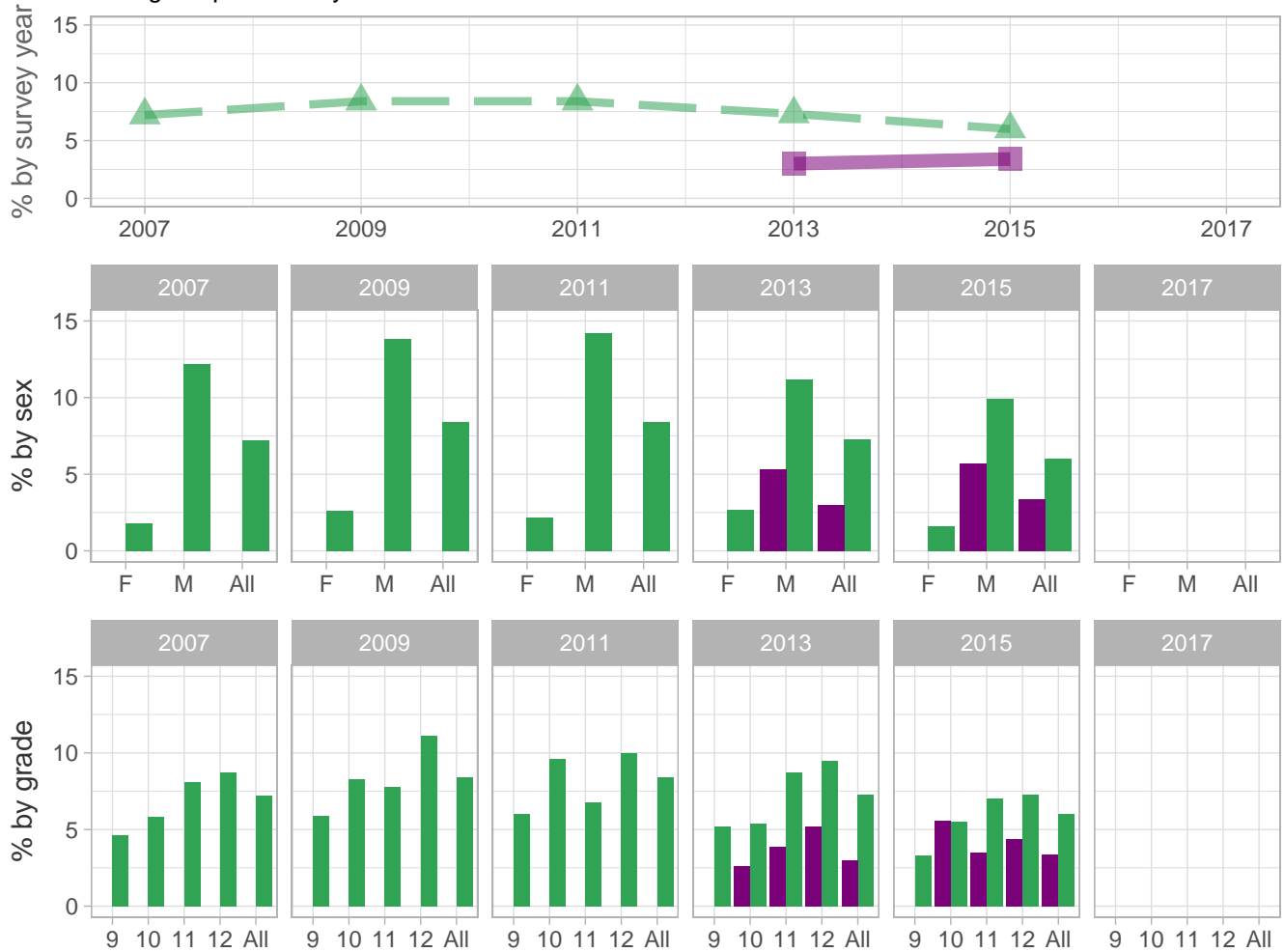
Number (n): Estimated number of students projected based on school enrollment data.

-: Data not available; *: Suppressed due to small cell sizes.

 School
  Region
  NH

Tobacco Use – Behaviors

Percent of students who used smokeless tobacco (chewing tobacco, snuff, or dip) on at least 1 day during the past 30 days



School-level by Sex and Grade

| | | 2009(pct) | 2011(pct) | 2013(pct) | 2015(pct) | 2017(pct) | 2017(n) |
|-----------------|------|-----------|-----------|-----------|-----------|-----------|---------|
| By sex | F | - | * | * | * | - | - |
| | M | - | * | 5.3 | 5.7 | - | - |
| By grade | 9th | - | * | * | * | - | - |
| | 10th | - | * | 2.6 | 5.6 | - | - |
| | 11th | - | - | 3.9 | 3.5 | - | - |
| | 12th | - | - | 5.2 | 4.4 | - | - |
| All | All | - | * | 3.0 | 3.4 | - | - |

How the question was actually asked: During the past 30 days, on how many days did you use chewing tobacco, snuff, or dip, such as Redman, Levi Garrett, Beechnut, Skoal, Skoal Bandits, or Copenhagen?; a: 0 days; b: 1 or 2 days; c: 3 to 5 days; d: 6 to 9 days; e: 10 to 19 days; f: 20 to 29 days; g: All 30 days;

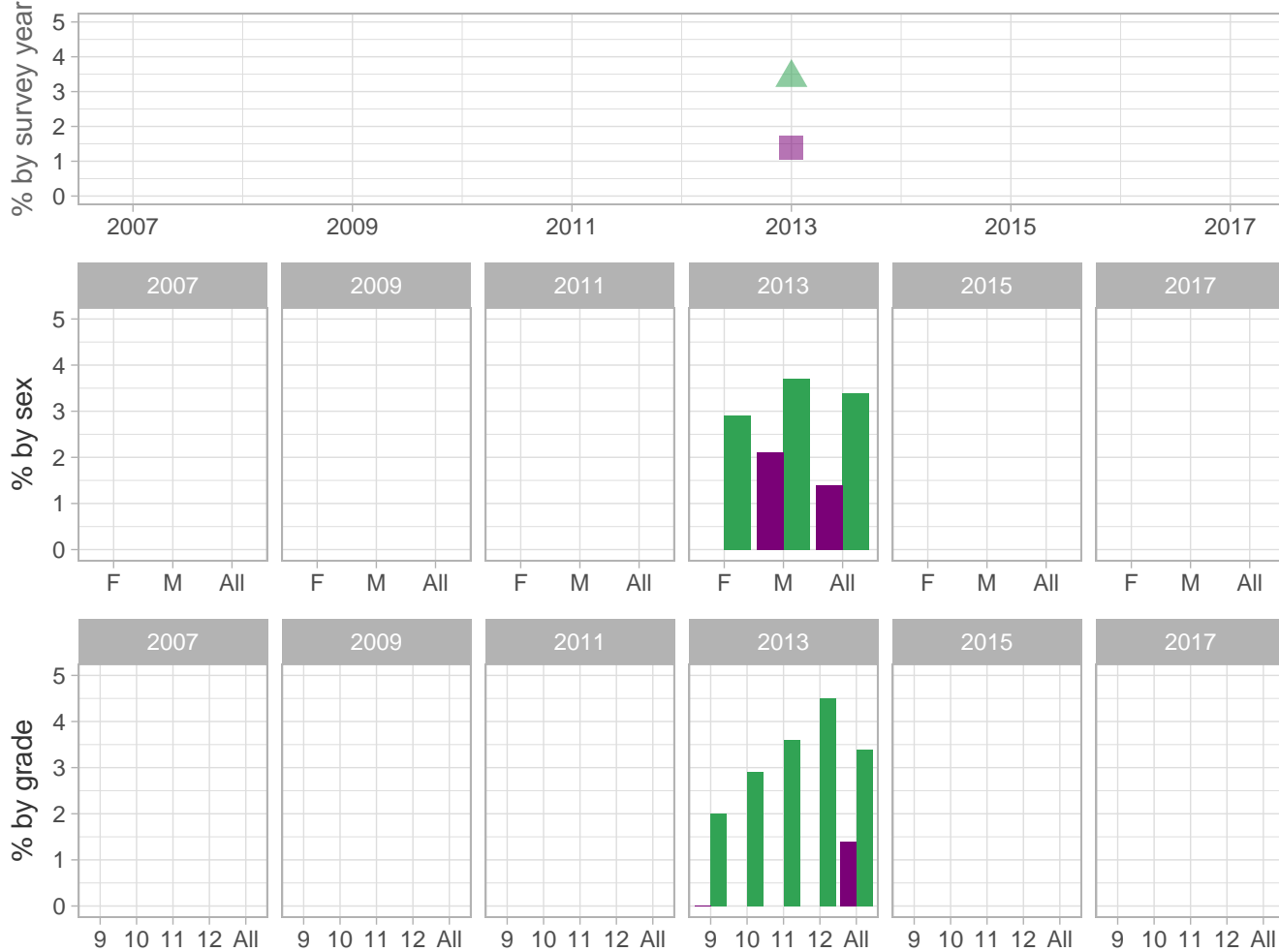
Percent (pct): numerator: bcdefg; denominator: abcdefg; qid: 31; 2007q31; 2009q28; 2011q31; 2013q36; 2015q35; 2017q999; Number (n): Estimated number of students projected based on school enrollment data.

-: Data not available; *: Suppressed due to small cell sizes.

 School
  Region
  NH

Tobacco Use – Behaviors

Percent of students who smoked cigarettes on school property on at least 1 day during the past 30 days



School-level by Sex and Grade

| | | 2009(pct) | 2011(pct) | 2013(pct) | 2015(pct) | 2017(pct) | 2017(n) |
|-----------------|------|-----------|-----------|-----------|-----------|-----------|---------|
| By sex | F | - | - | * | - | - | - |
| | M | - | - | 2.1 | - | - | - |
| By grade | 9th | - | - | 0.0 | - | - | - |
| | 10th | - | - | * | - | - | - |
| | 11th | - | - | * | - | - | - |
| | 12th | - | - | * | - | - | - |
| All | All | - | - | 1.4 | - | - | - |

How the question was actually asked: During the past 30 days, on how many days did you smoke cigarettes on school property?; a: 0 days; b: 1 or 2 days; c: 3 to 5 days; d: 6 to 9 days; e: 10 to 19 days; f: 20 to 29 days; g: All 30 days;

Percent (pct): numerator: bcdefg; denominator: abcdefg; qid: 151; 2007q999; 2009q999; 2011q999; 2013q33; 2015q999; 2017q999;

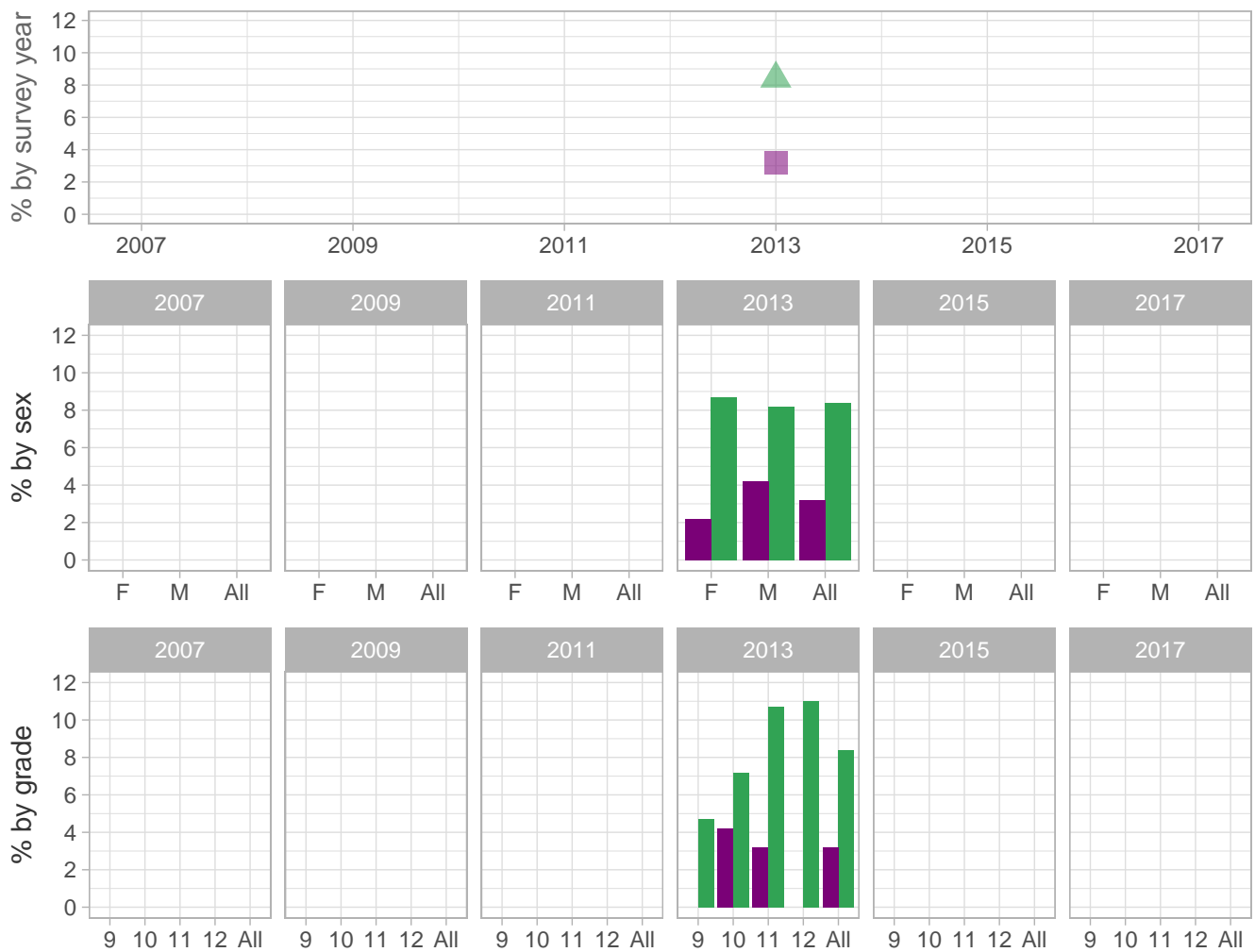
Number (n): Estimated number of students projected based on school enrollment data.

-: Data not available; *: Suppressed due to small cell sizes.

 School
  Region
  NH

Tobacco Use – Behaviors

Percent of students who smoked cigarettes daily (on all 30 days) during the past 30 days



School-level by Sex and Grade

| | | 2009(pct) | 2011(pct) | 2013(pct) | 2015(pct) | 2017(pct) | 2017(n) |
|-----------------|------|-----------|-----------|-----------|-----------|-----------|---------|
| By sex | F | - | - | 2.2 | - | - | - |
| | M | - | - | 4.2 | - | - | - |
| By grade | 9th | - | - | * | - | - | - |
| | 10th | - | - | 4.2 | - | - | - |
| | 11th | - | - | 3.2 | - | - | - |
| | 12th | - | - | * | - | - | - |
| All | All | - | - | 3.2 | - | - | - |

How the question was actually asked: Have you ever smoked cigarettes daily, that is, at least one cigarette every day for 30 days?; a: Yes; b: No;

Percent (pct): numerator: a; denominator: ab; qid: 152; 2007q999; 2009q999; 2011q999; 2013q34; 2015q999; 2017q999;

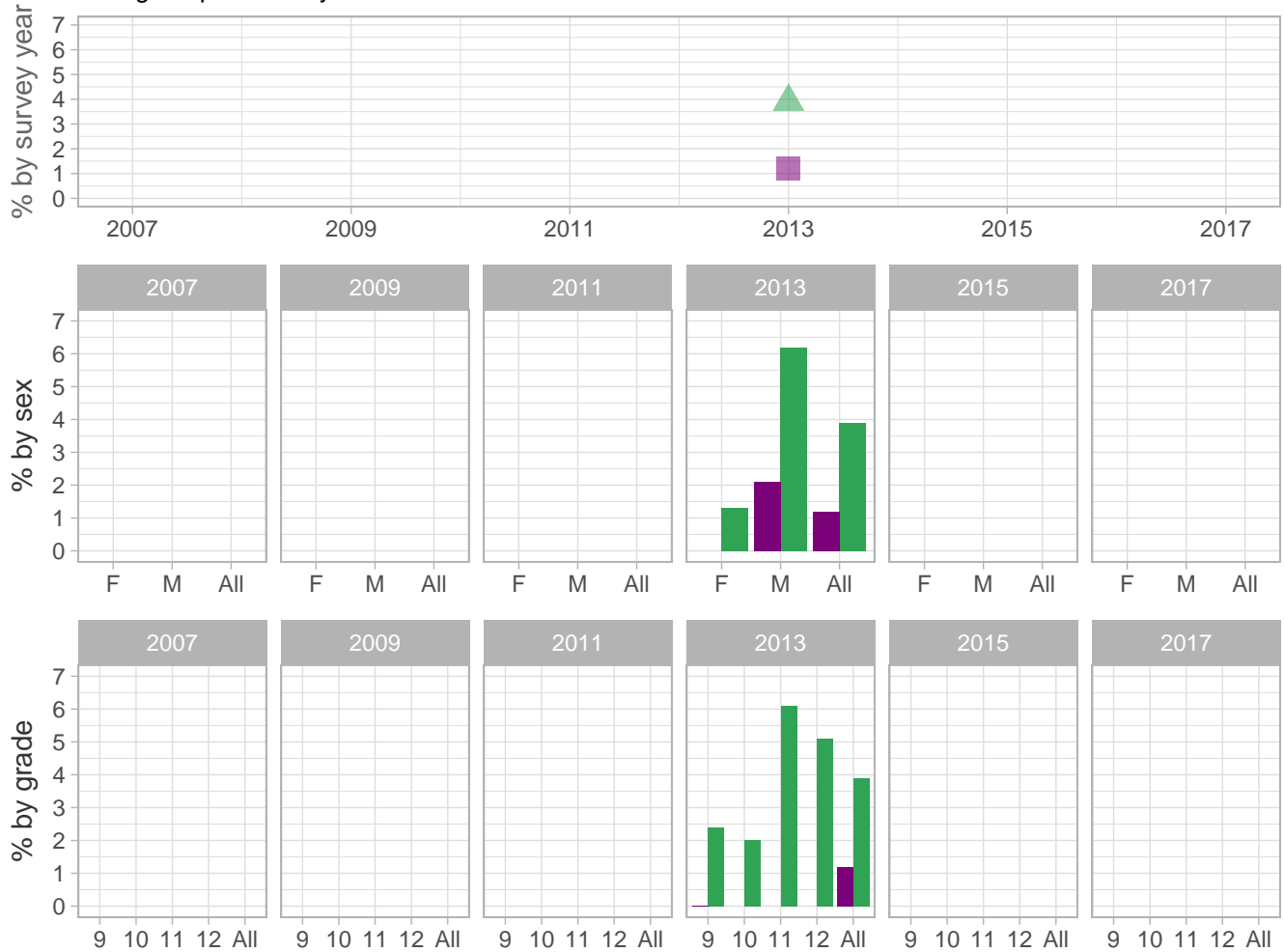
Number (n): Estimated number of students projected based on school enrollment data.

-: Data not available; *: Suppressed due to small cell sizes.

 School
  Region
  NH

Tobacco Use – Behaviors

Percent of students who used chewing tobacco, snuff, or dip on school property on at least 1 day during the past 30 days



School-level by Sex and Grade

| | | 2009(pct) | 2011(pct) | 2013(pct) | 2015(pct) | 2017(pct) | 2017(n) |
|-----------------|------------|-----------|-----------|-----------|-----------|-----------|---------|
| By sex | F | - | - | * | - | - | - |
| | M | - | - | 2.1 | - | - | - |
| By grade | 9th | - | - | 0.0 | - | - | - |
| | 10th | - | - | * | - | - | - |
| | 11th | - | - | * | - | - | - |
| | 12th | - | - | * | - | - | - |
| All | All | - | - | 1.2 | - | - | - |

How the question was actually asked: During the past 30 days, on how many days did you use chewing tobacco, snuff, or dip on school property?; a: 0 days; b: 1 or 2 days; c: 3 to 5 days; d: 6 to 9 days; e: 10 to 19 days; f: 20 to 29 days; g: All 30 days;

Percent (pct): numerator: bcdefg; denominator: abcdefg; qid: 154; 2007q999; 2009q999; 2011q999; 2013q37; 2015q999; 2017q999;

Number (n): Estimated number of students projected based on school enrollment data.

-: Data not available; *: Suppressed due to small cell sizes.